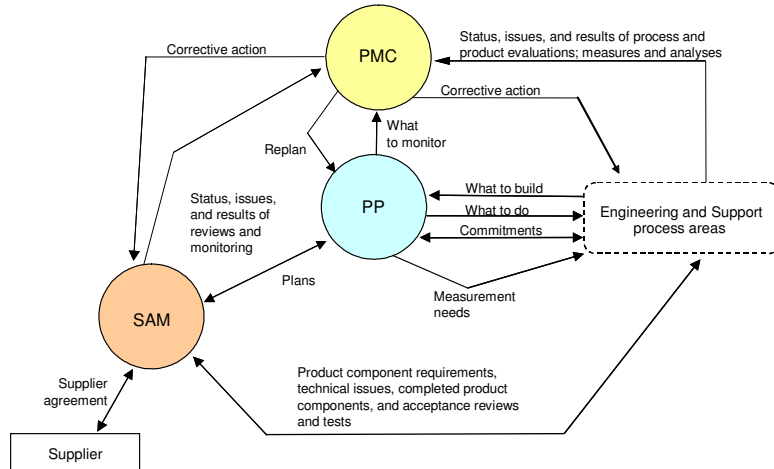
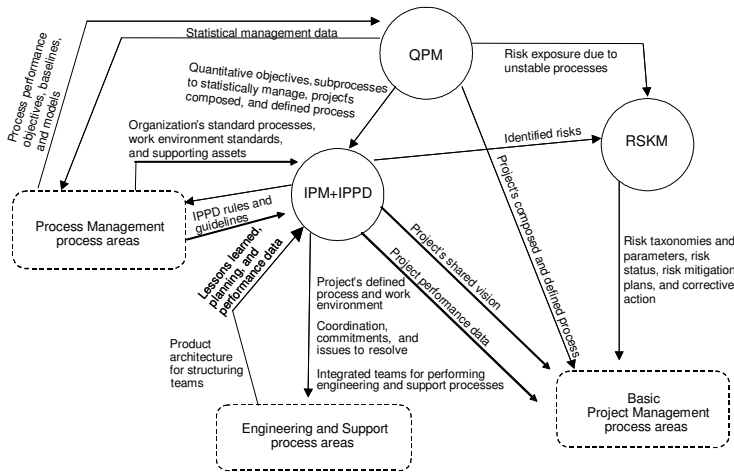


Project Management : Basic Project M. Process Areas



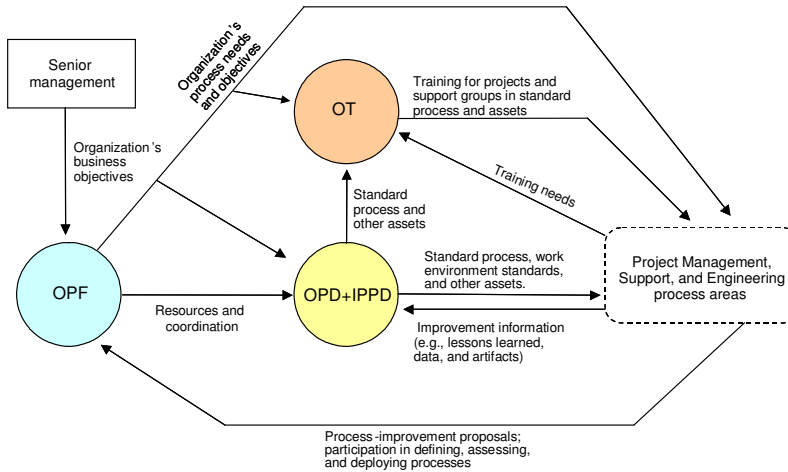
PMC = Project Monitoring and Control
PP = Project Planning
SAM = Supplier Agreement Management

Project Management : Advanced Project M. Process Areas



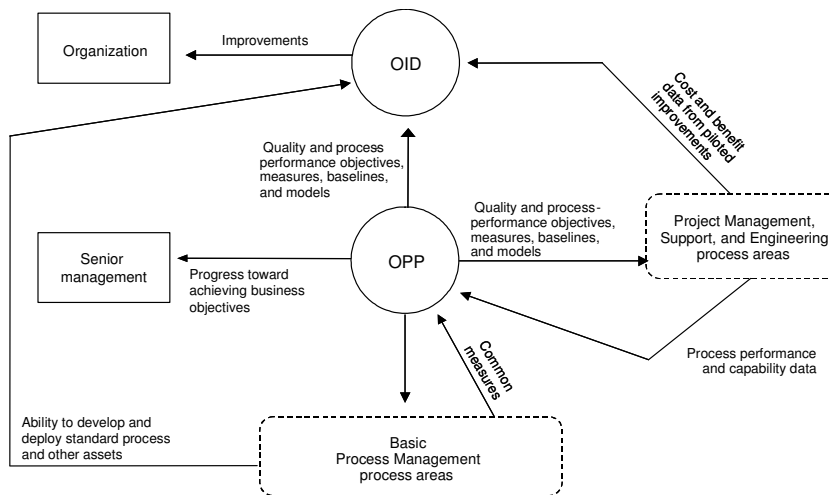
IPM+IPPD = Integrated Project Management (with the IPPD addition)
QPM = Quantitative Project Management
RSKM = Risk Management

Process Management : Basic Process M. Process Areas



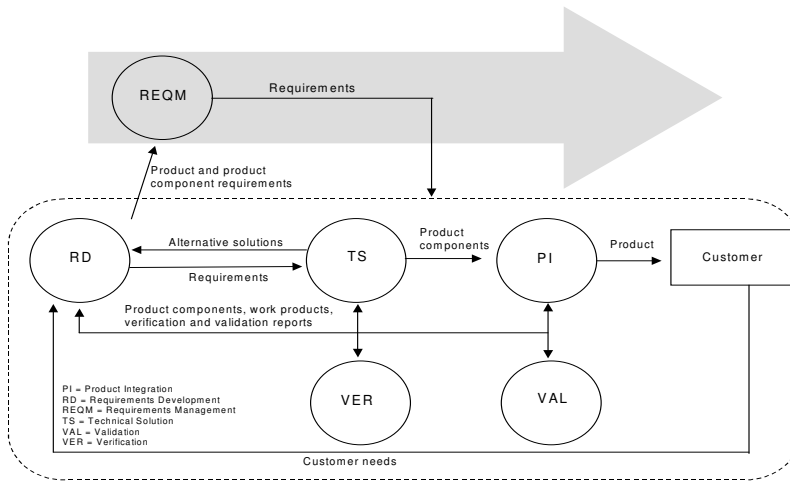
OPF = Organizational Process Focus
 OT = Organizational Training
 OPD+IPPD = Organizational Process Definition (with the IPPD addition)

Process Management : Advanced Process M. Process Areas

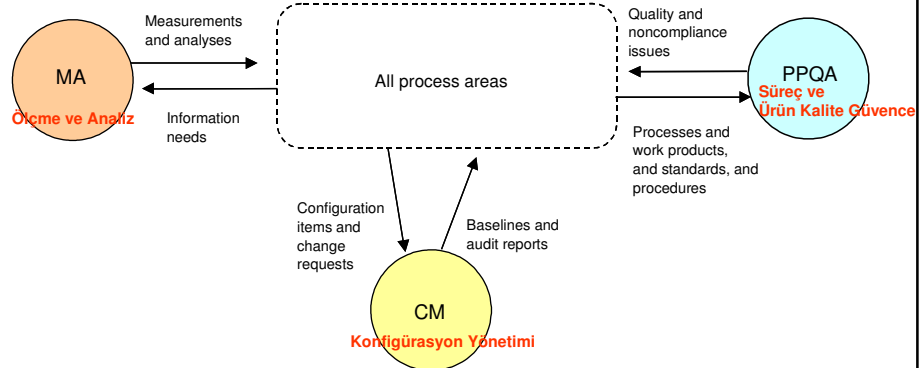


OID = Organizational Innovation and Deployment
 OPP = Organizational Process Performance

Engineering Process Areas



Support : Basic Support Process Areas



MA = Measurement and Analysis
CM = Configuration Management
PPQA = Process and Product Quality Assurance

Support : Advanced Support Process Areas

